

Connecting to ResNet – Windows XP (Service Pack 2)

The following instructions are for Windows XP (Service Pack 2) users. If your computer uses any other operating system, please contact the UNO Help Desk at 280-HELP(4357) for assistance.

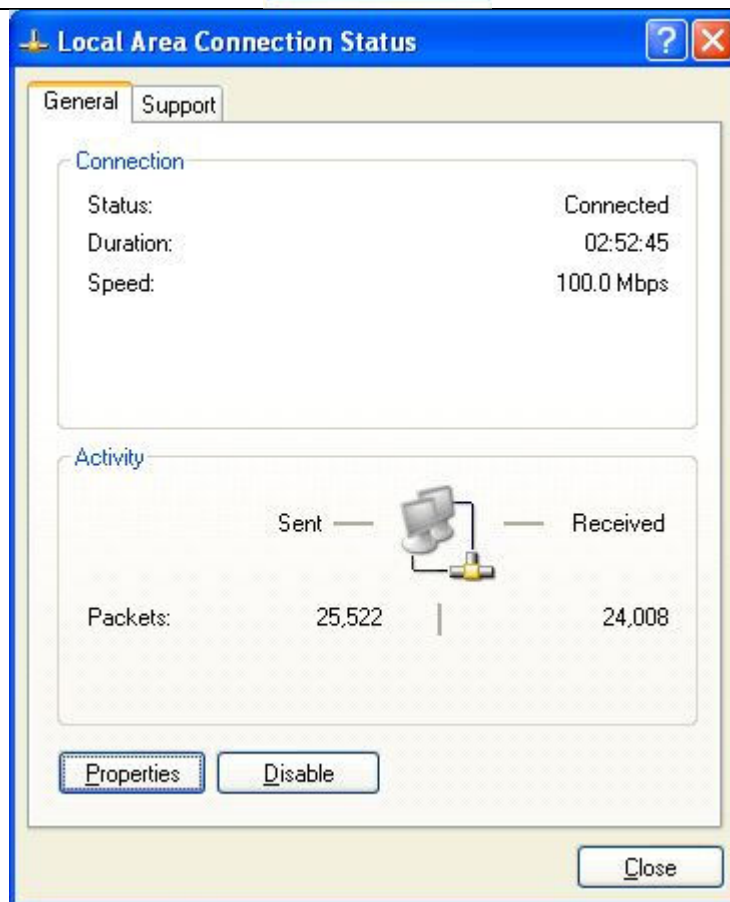
1. Click Start and then choose Control Panel.
2. Inside of the Control Panel find Network Connections and double click it.

3. Double click Local Area Connection



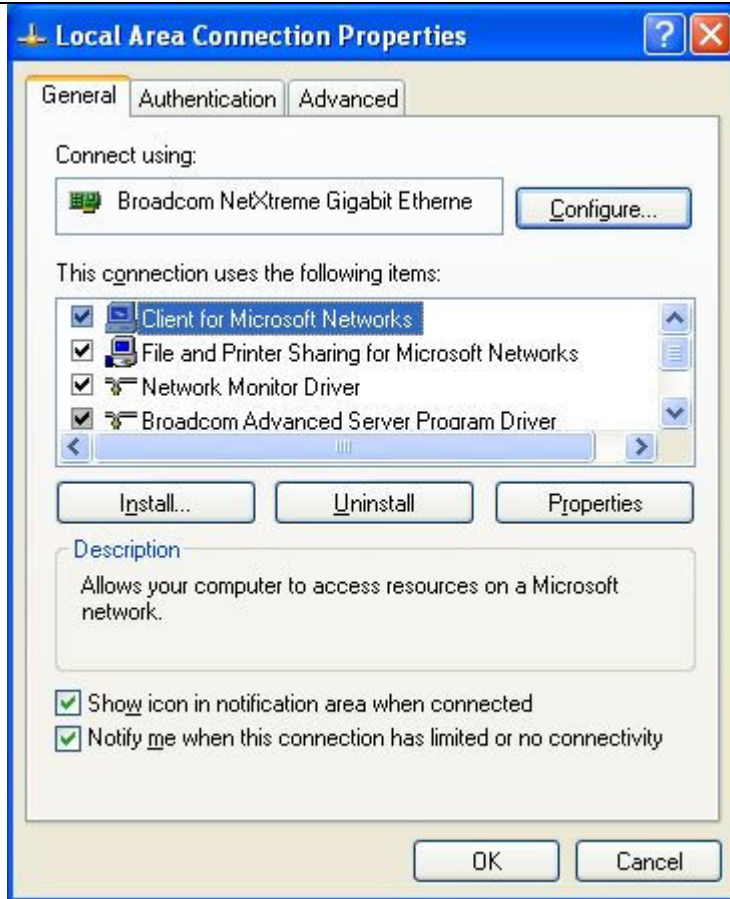
The Local Area Connection Status window will appear.

4. Click the Properties button.

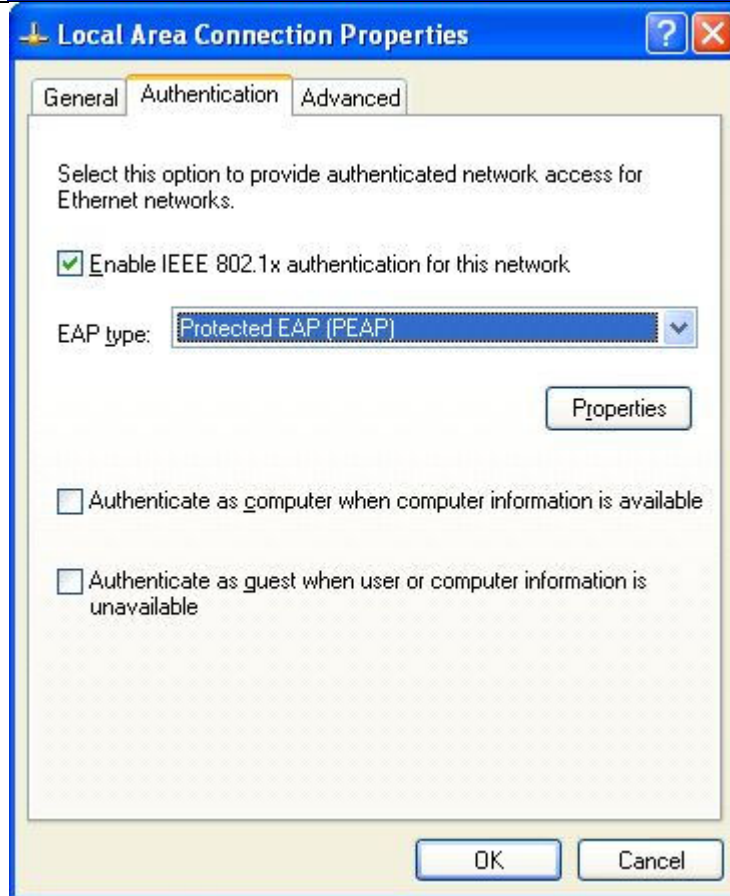


The Properties window will appear.

5. Click the General tab and check both boxes at the bottom. (starting with “Show icon...” & “Notify me...”)

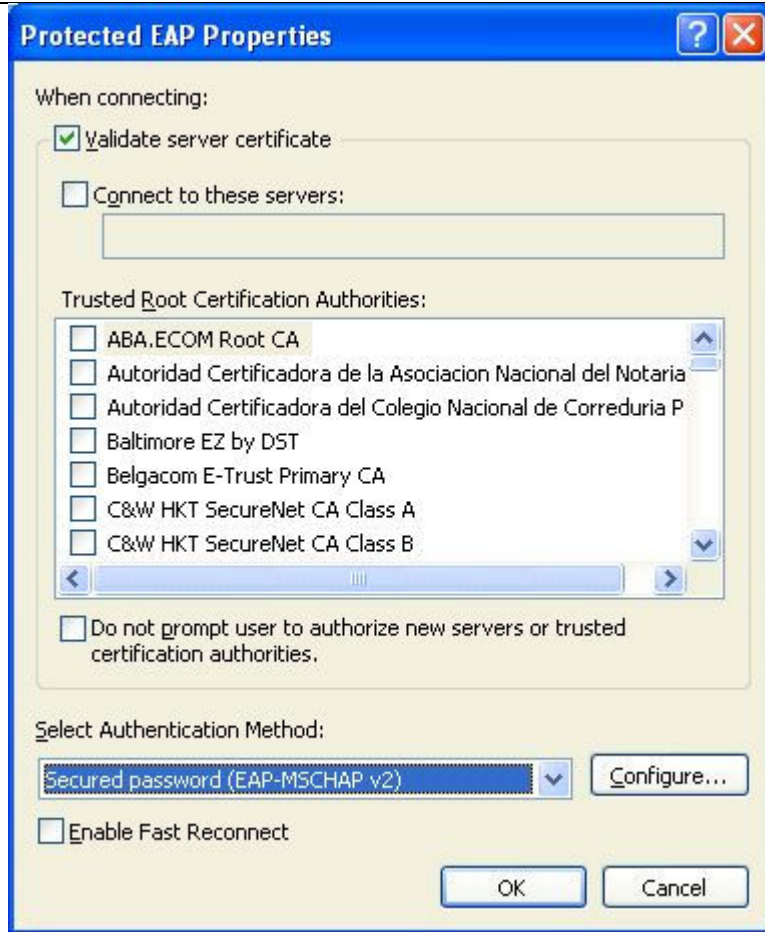


6. Click the Authentication tab at the top of the window and check the boxes like the picture at right. Make sure to change the drop down menu by the EAP type. Click the Properties button when finished. **If this tab is not visible, refer to the Troubleshooting section at the end.



The Protected EAP Properties window will appear.

7. Only check the Validate Server Certificate box at the top. Make sure the drop down menu says Secured password (EAP-MSCHAP v2). When finished, click the Configure button on the lower right.



8. Uncheck the box in this final window.

9. Then click ok/close until no more windows are on the desktop.



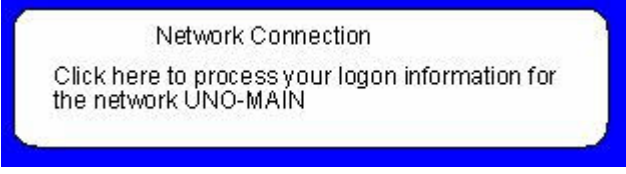



10. Click Start and then choose Control Panel.

11. Double click Network Connections.

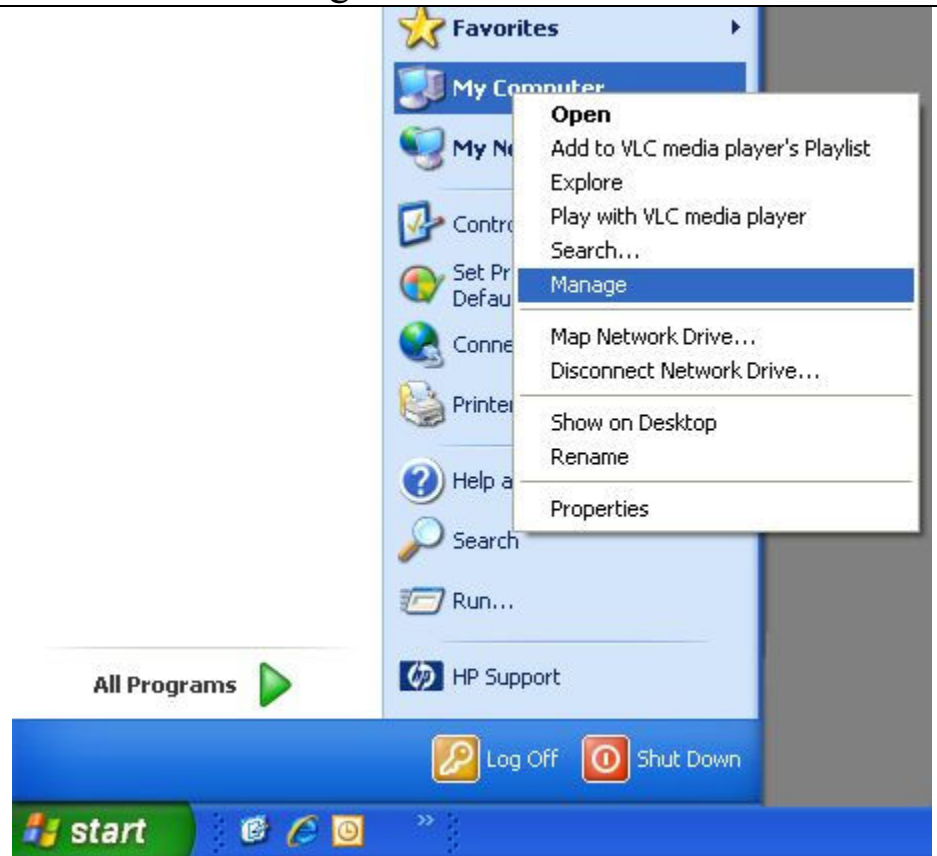
12. Right click Local Area Connection and choose Disable.

13. Right click Local Area Connection and choose Enable.

<p>14. A balloon will appear like the following. Click the balloon.</p>	 <p>A blue-bordered balloon with a white background. The text inside reads: "Network Connection" followed by "Click here to select a certificate or other credentials for connection to the network UNO-MAIN".</p>
<p>15. Enter your UNO user name & password in this next window. In the Logon Domain box, enter UNO-DOMAIN. And click OK.</p>	 <p>The "Enter Credentials" dialog box features a header with the title and a close button. Below the header is an illustration of two laptops with a globe between them. The main area contains three input fields: "User name:", "Password:", and "Logon domain:". At the bottom are "OK" and "Cancel" buttons.</p>
<p>16. Yet another balloon will pop up. Click the balloon.</p>	 <p>A blue-bordered balloon with a white background. The text inside reads: "Network Connection" followed by "Click here to process your logon information for the network UNO-MAIN".</p>
<p>17. Click OK to accept the Certificate Authority.</p> <p>The machine will be connected in a few seconds.</p>	 <p>The "Validate Server Certificate" dialog box has a title bar and a scrollable text area. The text area contains: "The Root Certification Authority for the server's certificate is: VeriSign Trust Network. If this is the correct certificate, click OK to connect and you will not see this message again. Click CANCEL to drop connection." Below the text area is a "View Server Certificate" button, and at the bottom are "OK" and "Cancel" buttons.</p>
<p>If you need assistance with this process, or have any other trouble connecting to ResNet, please contact the UNO Help Desk at 280-HELP(4357).</p>	

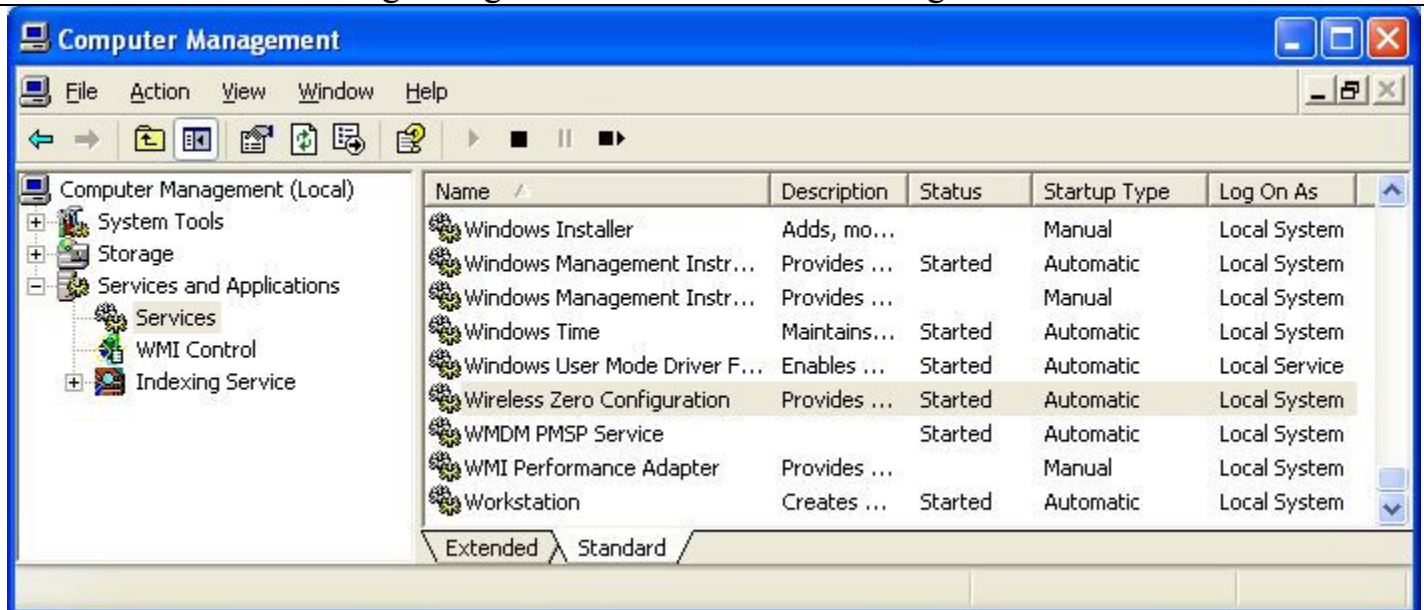
Troubleshooting

If the authentication tab does not appear, click Start, and then right click My Computer and choose Manage.



The Computer Management window will appear. Click the + sign next to Services and Applications, and then click Services.

Look in the frame to the right. Right click Wireless Zero Configuration and choose Start.



Close the window by clicking the red X in the upper right corner.

Now go back to step 6 where the Authentication tab should appear.

If you need assistance with this process, or have any other trouble connecting to ResNet, please contact the UNO Help Desk at 280-HELP(4357).

.: ResNet Copyright Infringement Policy .:

In accordance with federal legislation, specifically the Digital Millennium Copyright Act of 1998, ResNet Internet Service will undertake very specific action when formal notifications of copyright infringement by ResNet users have been received from copyright holders or their representatives. The ResNet Support Group will certify that positive contact with the user has taken place and that the user has either ceased the infringing activity or that ResNet Support has taken action on its own with the result of ceasing the infringing activity when the activity originates from within the ResNet network.

In response to this legislation, the ResNet Support Group has developed the following procedures. Compliance with applicable law is the ultimate goal. Much of the activity occurring in violation of copyright laws is the result of peer-to-peer file sharing software usage by users who are, as often as not, unaware that certain uses of this software violates copyright laws. Consequently, user education is a necessary component of required compliance efforts. ResNet staff will maintain sufficiently detailed records reflecting infringement notices received and responses thereto. The following are the procedural steps to be taken in response to formal notifications of copyright infringement:

1. University Computing & Communications receives notice that a user may be violating copyright laws.
2. Upon determination that the user is connected to ResNet based on the IP address given in the complaint, the complaint is routed to the ResNet Support Group.
3. ResNet staff will search records and determine the identity of the user.
4. ResNet staff will search records to determine whether the user is a repeat offender. If it is clear that the user is a repeat offender, the complaint will be handled as described under "Repeat Offenders" below. If this complaint is a first offense, the "First Offense" procedure will be followed.

First Offense

1. ResNet Support will immediately suspend network service.
2. ResNet Support issues an e-mail notice to the user explaining the reason for suspension. The infringement notice will be included as an enclosure to the e-mail notice.
3. ResNet Support will reactivate service after contacting the ResNet user.

Repeat Offenders

1. ResNet Support will immediately terminate network service.
2. ResNet Support will send an e-mail notice to the user explaining that a second or subsequent complaint of infringing activity has been received and that the user's network service has been terminated.
3. ResNet Support will notify the University Office of Judicial & Student Assistance that a second offence has occurred and will forward all pertinent information for review.

Failure to adhere to UNO Acceptable Use Policies may result in loss of privileges as well as disciplinary or legal action.